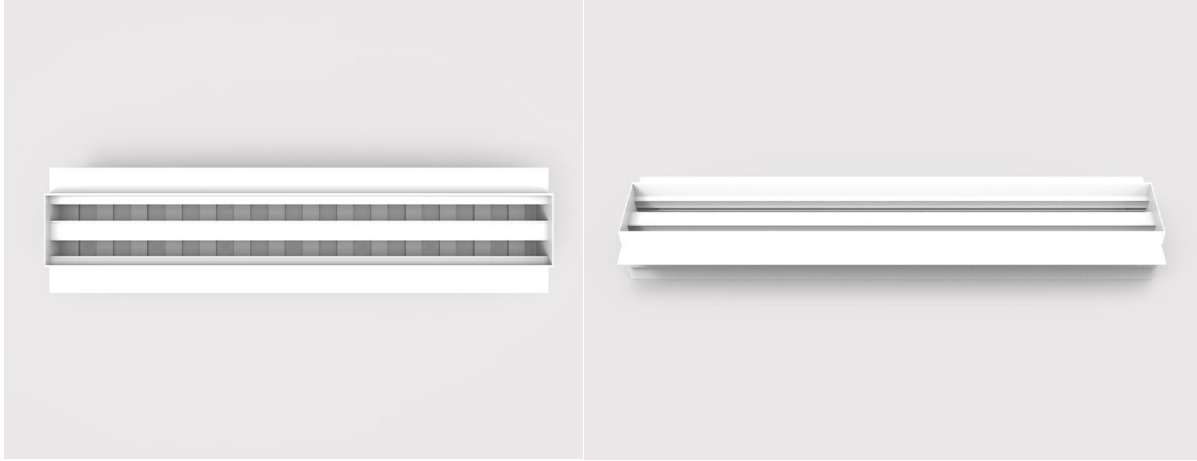


SLOT DIFFUSERS-LINEER BAR-CKD-16



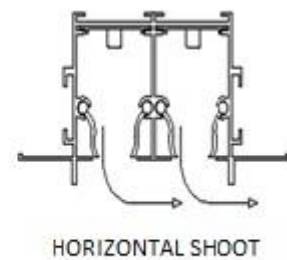
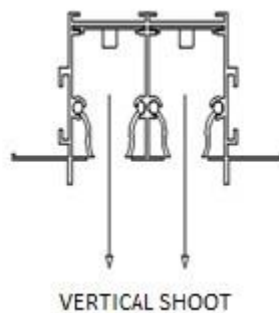
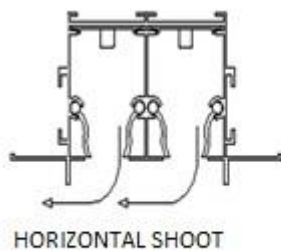
AREA OF USAGE AND FEATURES:It is used as blowing and suction diffusers in Hvac systems. It is suitable for horizontal and vertical shots. The ideal shooting distance is between 2.5-8 m. It is used in ceiling and wall applications. It is standard bridge mounted. The way of mounting can be changed optionally.

MATERIAL: Body and wings are made of aluminum profile manufactured by extrusion method.

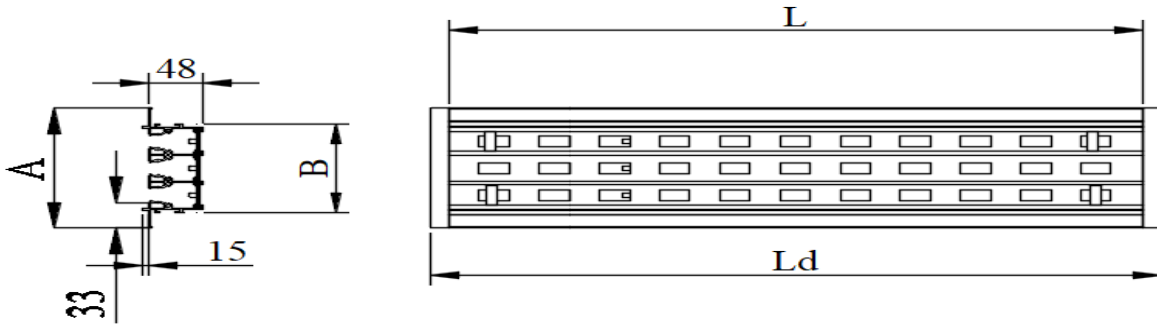
SURFACE COATING: The product can be manufactured in any color with electrostatic powder paint. The wings are manufactured in standard black color.

ACCESSORIES: Plenum box

AIR SHOT TYPES:

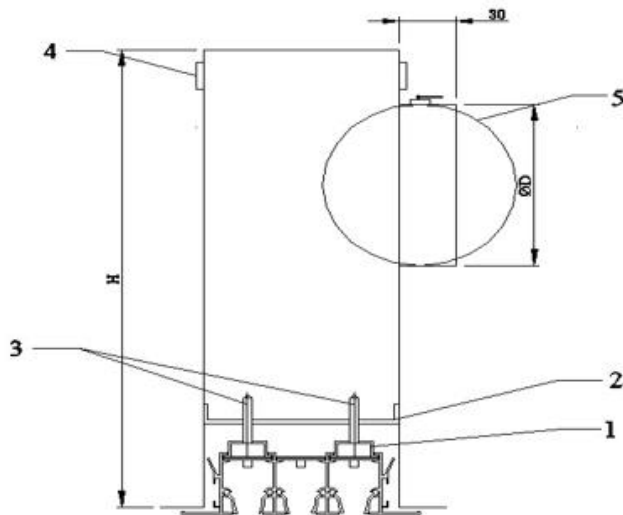


TECHNICAL MEASUREMENT



NUMBER OF SLOTS	1	2
A mm.	81	120
B mm.	45	80

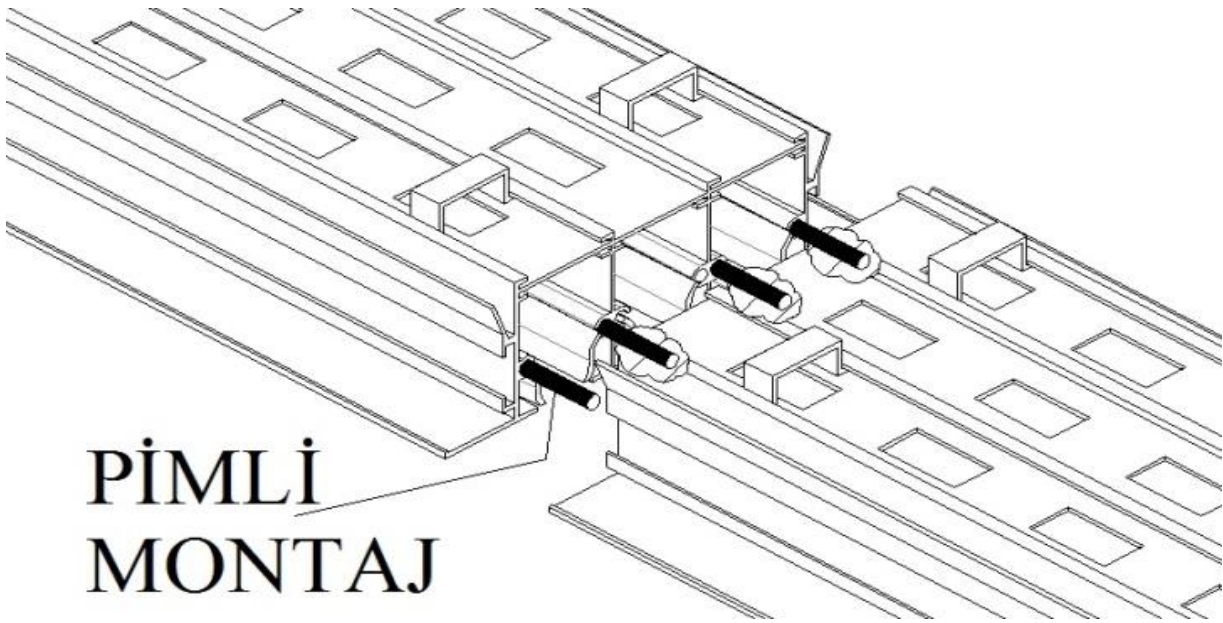
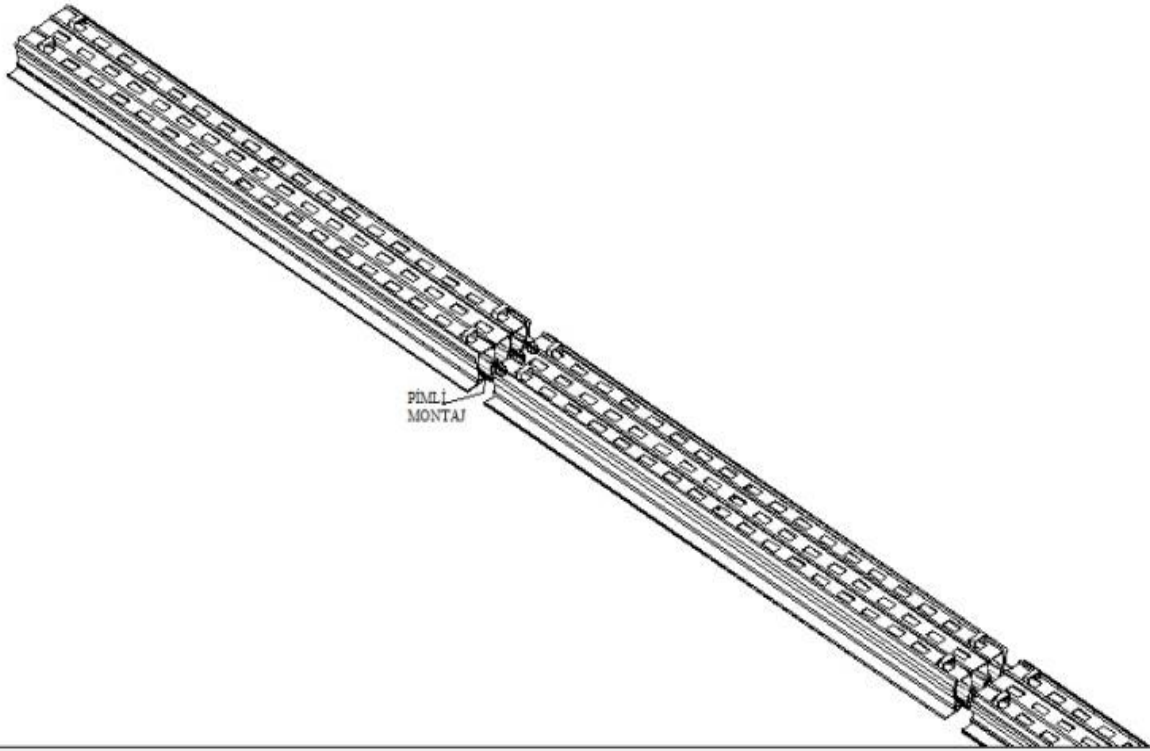
SLOT MOUNTING DETAIL :



- 1- Slot Bridge Piece (On Slot)
- 2- Box Bridge piece (Inside the box)
- 3- Assembly Screw And Special Nut (M5 * 50)
- 4- Box Hanger Apparatus
- 5- Box Perforated Damper (Internal Control)

L (mm)		NUMBER OF SLOTS					
		1	2	3	4	5	6
500 – 1500	ØD (mm)	138	198	218	248	248	248
	h (mm)	218	278	298	328	328	328
1500 – 2000	ØD (mm)	*138 x 2	*198 x 2	*218 x 2	*248 x 2	*248 x 2	*248 x 2
	h (mm)	273	341	400	487	487	487

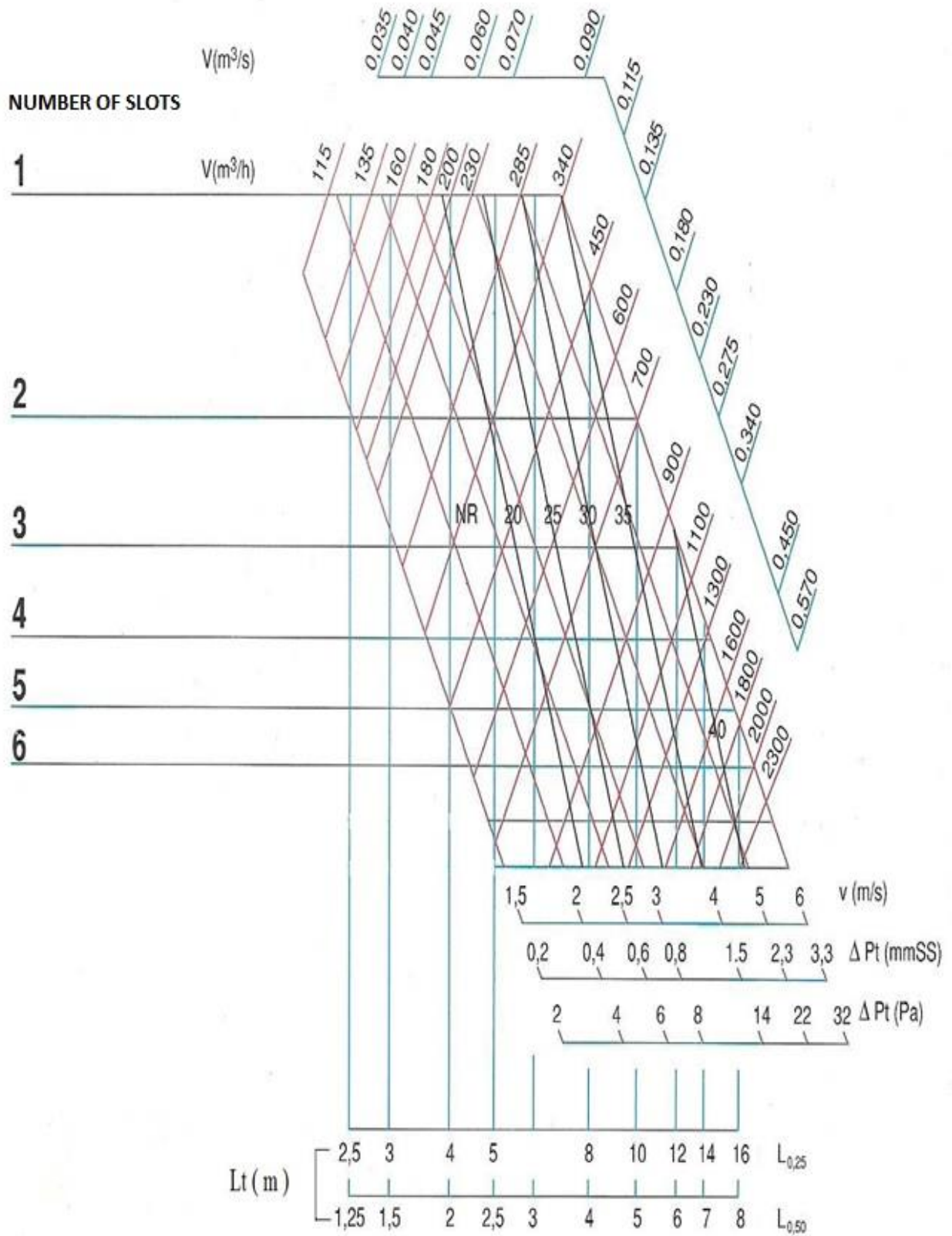
PIECE SLOT MOUNTING DETAIL :



PİMLİ
MONTAJ

PIN MOUNTING

VERTICAL SHOOT :



HORIZONTAL SHOOT

